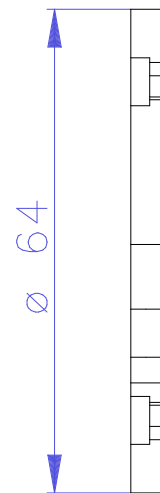
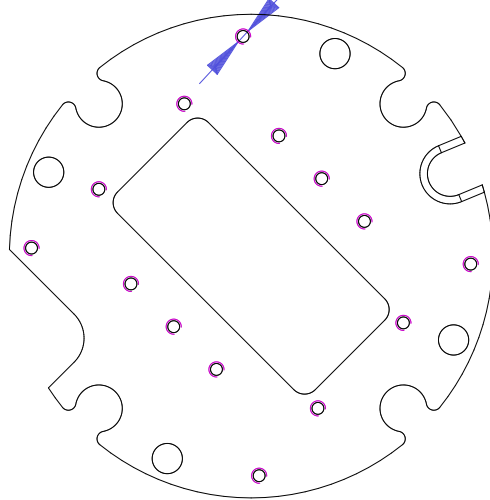


M2x0.40, THRU, 14 HOLES



Revision		Part #		Description			
A		0353-19-91A		IMU Mount, Top			
Material		Aluminum 6061		Serial No.			
Finish		Chromate Conversion		Assembly No.			
Weight(g)		21.21		Date		Scale	1:1
Surface				Notes			
Copyright (c) 2015 Elphel, Inc. Licensed under CERN OHL v.1.1 or later - see http://ohwr.org/cernohl Permission is also granted to copy, distribute and/or modify this document under the terms of the GNU Free Documentation License, Version 1.3 or any later version published by the Free Software Foundation; with no Invariant Sections, no Front-Cover Texts, and no Back-Cover Texts. A copy of the license is included in the section entitled "GNU Free Documentation License".				Two holes DIA 1.58 are press fit for 1/16" Dowel pins			