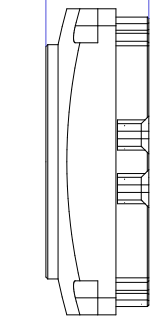


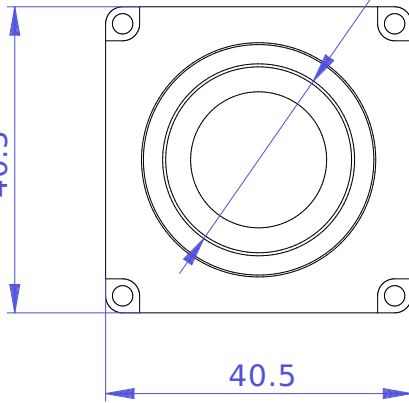
13.62



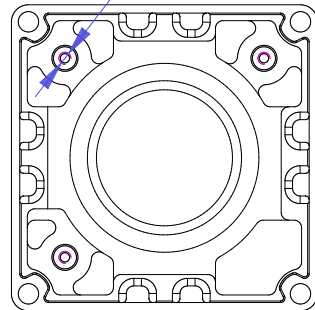
1"x32, 6.47mm deep

M1.6x0.35, 4mm deep, 3 holes

40.5



40.5



Revision	Part #	Description			
A	0393-12-29	Sensor front end, CS-mount			
Material	Aluminum 6061-T6	Serial No.			
Finish	Anodize/chromate conversion	Assembly No.			
Weight(g)	23.62	Date	Scale		
Surface		Notes			
Copyright (c) 2015 Elphel, Inc. Licensed under CERN OHL v.1.1 or later - see http://ohwr.org/cernohl Permission is also granted to copy, distribute and/or modify this document under the terms of the GNU Free Documentation License, Version 1.3 or any later version published by the Free Software Foundation; with no Invariant Sections, no Front-Cover Texts, and no Back-Cover Texts. A copy of the license is included in the section entitled "GNU Free Documentation License".					