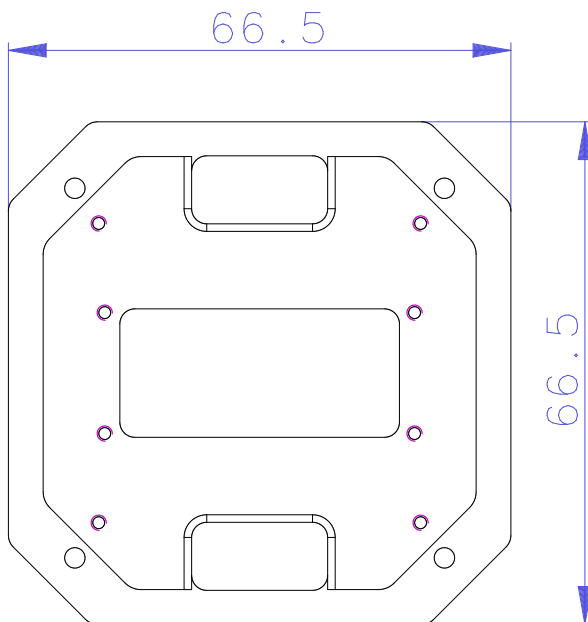
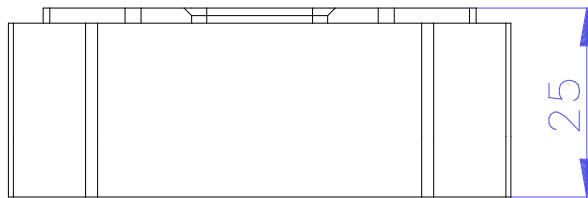


M2x0.40, THRU, 8 HOLES
M2.5x0.45, 10 MM DEEP,
8 HOLES



Revision	Part #	Description			
	0393-18-50	IMU enclosure			
Material	Aluminum 6061-T6	Serial No.			
Finish	black anodize	Assembly No.			
Weight(g)	77.74	Date	Scale	1:1	
Surface		Notes			
Copyright (c) 2015 Elphel, Inc. Licensed under CERN OHL v.1.1 or later - see http://ohwr.org/cernohl Permission is also granted to copy, distribute and/or modify this document under the terms of the GNU Free Documentation License, Version 1.3 or any later version published by the Free Software Foundation; with no Invariant Sections, no Front-Cover Texts, and no Back-Cover Texts. A copy of the license is included in the section entitled "GNU Free Documentation License".					